

Assembly Procedure

1.

- Place crimp sleeve over cable.
- Trim cable to dimensions shown.
- Ensure centre conductor is not damaged.
- Tin centre conductor.



2.

- Fan the braid out.
- Push body onto the cable with the ferrule between the braid and dielectric.
- Ensure centre conductor is in place inside the groove on the centre contact.
- Slide the crimp sleeve over the braid.
- Crimp the crimp sleeve using the appropriate sized crimp tool. (trim excess braid if necessary)



3.

- Carefully solder the centre conductor to the centre pin.
- Inspect joint.



4.

- Place insulator into the Body.
- Place the cap into the Body.
- Press cap flush or slightly below surface of body,
- Check assembly.



Electrical Specification

Impedance: 50 Ohm
 Frequency: DC - 6 GHz
 Dielectric W/V: 500 V rms max (initial)
 Insulation res: 1000 M-Ohm min

Mechanical Specification

Centre contact retention
 Axial Force: 10N min
 Cable Retention: 50N min
 Mating cycles: 500

Environmental Specification

Operating Temp: -35 to +70 Deg C

Tooling

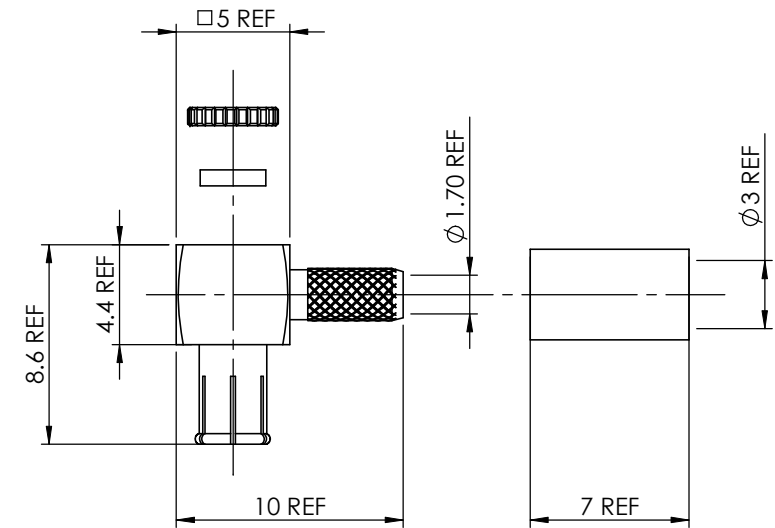
Centre Contact: SOLDER
 Crimp Sleeve: HEX 3.25mm A/F

DO NOT SCALE DRAWING

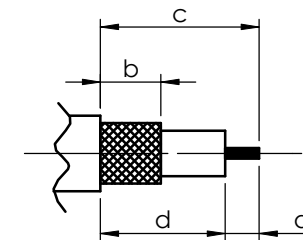


DATA SHEET

SHEET 1 OF 1



STRIPPING DIMENSIONS



a = 1.0mm
 b = 6.0mm
 c = 8.0mm
 d = 7.0mm

7	CRIMP SLEEVE	BRASS	GOLD
6	CENTRE CONTACT	BRASS	GOLD
5	CAP	BRASS	GOLD
4	CAP INSULATOR	DELRIN	N/A
3	OUTER CONTACT	BERYLLIUM COPPER	GOLD
2	INSULATOR	PTFE	N/A
1	BODY	BRASS	GOLD
ITEM	DESCRIPTION	MATERIAL	PLATING



COAX CONNECTORS LTD
 6-8 COLNE ROAD, TWICKENHAM,
 MIDDLESEX. TW1 4JR

REVISION
 A00

A4	DIMENSIONS ARE IN MILLIMETERS		
	NAME	SIGNATURE	DATE
DRAWN	GE		26/05/2009
CHK'D	CM		26/05/2009
APPV'D			

THE INFORMATION IS GIVEN AS AN INDICATION ONLY AND IS SUBJECT TO CHANGE WITHOUT NOTICE. IN THE CONTINUAL GOAL TO IMPROVE OUR PRODUCTS, WE RESERVE THE RIGHT TO MAKE ANY MODIFICATIONS NECESSARY WITHOUT PRIOR NOTICE.

Description	MCX R/A PLUG RG174/188/316
Part Number	45-105-D3-AD