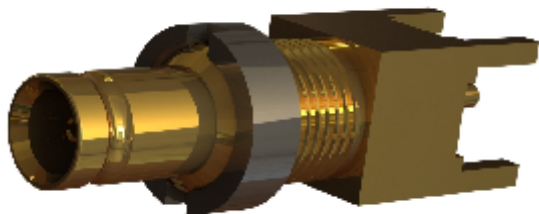
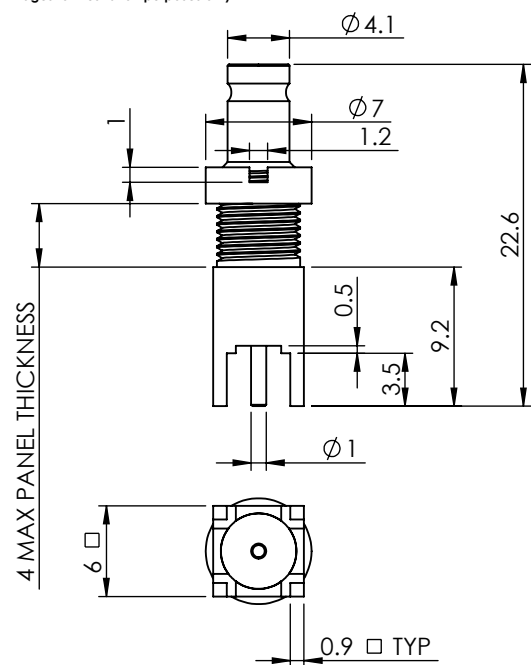


## 1.0/2.3 STRAIGHT PCB BULKHEAD JACK 75 OHM

### 52-454-D36



images for illustration purposes only



### Environmental Specification

Operating Temp: -55 to +155 Deg C.

IP Rating (Mated): N/A

### Electrical Specification

Impedance: 75 Ohm

Frequency: 0-6 GHz

Dielectric W/V: 750 Veff

Insulation res: 1000 M-Ohm

### Mechanical Specification

Contact Retention: 10 N min

Cable Retention: N/A

Mating cycles: 500

Weight: 2.65 g

### Connector Interface

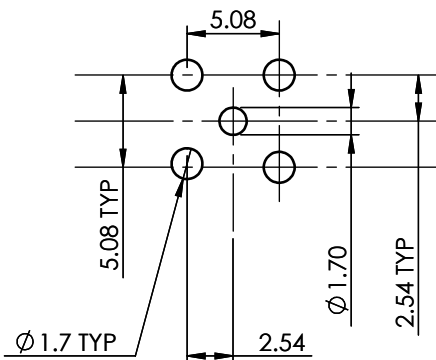


image for illustration purposes only

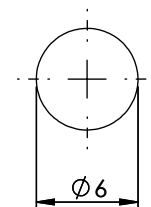
### Tooling

Castellated nut tool : 96-1135

### Recommended PCB Layout



### Recommended Mounting Hole



4	NUT	BRASS	NICKEL
3	INSULATOR	PTFE	N/A
2	CENTRE CONTACT	BeCu	GOLD
1	BODY	BRASS	GOLD
ITEM	DESCRIPTION	MATERIAL	PLATING

<b>A4</b>	<b>SHEET 1 OF 1</b>	<b>DIMENSIONS ARE IN MILLIMETRES</b>	
<b>REVISION :</b>	<b>A00</b>	<b>NAME</b>	<b>SIGNATURE</b>
<b>ISSUE :</b>	<b>2</b>	<b>DATE</b>	
<b>6-8 COLNE ROAD, TWICKENHAM, MIDDLESEX. TW1 4JR</b>		<b>DRAWN</b>	IG
		<b>CHK'D</b>	GE
		<b>APPV'D</b>	
<small>THE INFORMATION IS GIVEN AS AN INDICATION ONLY AND IS SUBJECT TO CHANGE WITHOUT NOTICE. IN THE CONTINUAL GOAL TO IMPROVE OUR PRODUCTS, WE RESERVE THE RIGHT TO MAKE ANY MODIFICATIONS NECESSARY WITHOUT PRIOR NOTICE.</small>			