

1. Slide crimp sleeve onto cable
2. Strip cable
3. Slide centre contact onto cable conductor up to cable dielectric
4. Ensure that the conductor is visible through the Contact inspection hole.
5. Crimp the centre contact using appropriate sized crimping tool
6. Fan the braid out
7. Slide the cable into the connector and push home until the centre contact is in place
8. Slide the crimp sleeve over the braid
9. Crimp the crimp sleeve using the appropriate sized crimp tool (trim excess braid if necessary)



COAX CONNECTORS LTD
6-8 COLNE ROAD, TWICKENHAM,
MIDDLESEX. TW1 4JR

Description	SMA B/H JACK for RG58
Part Number	30-254-D3-AH

Electrical Specification

Impedance: 50 Ohm
 Frequency: 0 - 12 Ghz (Cable Limited)
 Dielectric W/V: 750 V rms
 Insulation res: 5000 M-Ohm min

Mechanical Specification

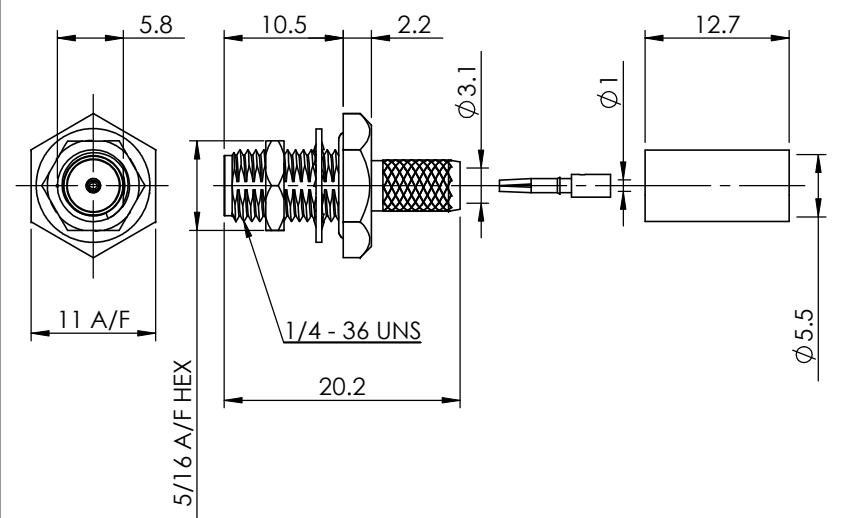
Centre contact retention
 Axial Force: 10N
 Cable Retention: 150N
 Mating cycles: 100

Environmental Specification

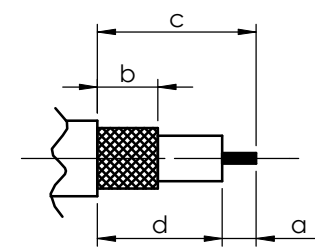
Operating Temp: TBC

Tooling

Centre Contact: HEX 1.72mm A/f
 COAX Tool No: 336A
 Crimp Sleeve: HEX 5.41mm A/F
 COAX Tool No: 336A



STRIPPING DIMENSIONS



a = 3.0mm
 b = 8.0mm
 c = 13.0mm
 d = 10.0mm

7	CRIMP SLEEVE	BRASS	GOLD
6	CENTRE CONTACT	BeCu	GOLD
5	NUT	BRASS	GOLD
4	WASHER	BRASS	GOLD
3	GASKET	SILICONE	N/A
2	INSULATOR	PTFE	N/A
1	BODY	BRASS	GOLD
ITEM	DESCRIPTION	MATERIAL	PLATING

REVISION	A01	DIMENSIONS ARE IN MILLIMETERS		
A4		NAME	SIGNATURE	DATE
DRAWN	GE			28/01/2010
CHK'D	PR			28/01/2010
APPV'D				
THE INFORMATION IS GIVEN AS AN INDICATION ONLY AND IS SUBJECT TO CHANGE WITHOUT NOTICE. IN THE CONTINUAL GOAL TO IMPROVE OUR PRODUCTS, WE RESERVE THE RIGHT TO MAKE ANY MODIFICATIONS NECESSARY WITHOUT PRIOR NOTICE.				