

© 2008. THIS DOCUMENT IS THE PROPERTY OF COAX CONNECTORS LTD. REPRODUCTION OR COMMUNICATION IN ANY FORM TO A THIRD PARTY IS PROHIBITED WITHOUT PRIOR WRITTEN CONSENT

WEBSITE VIDEO No.

DO NOT SCALE DRAWING

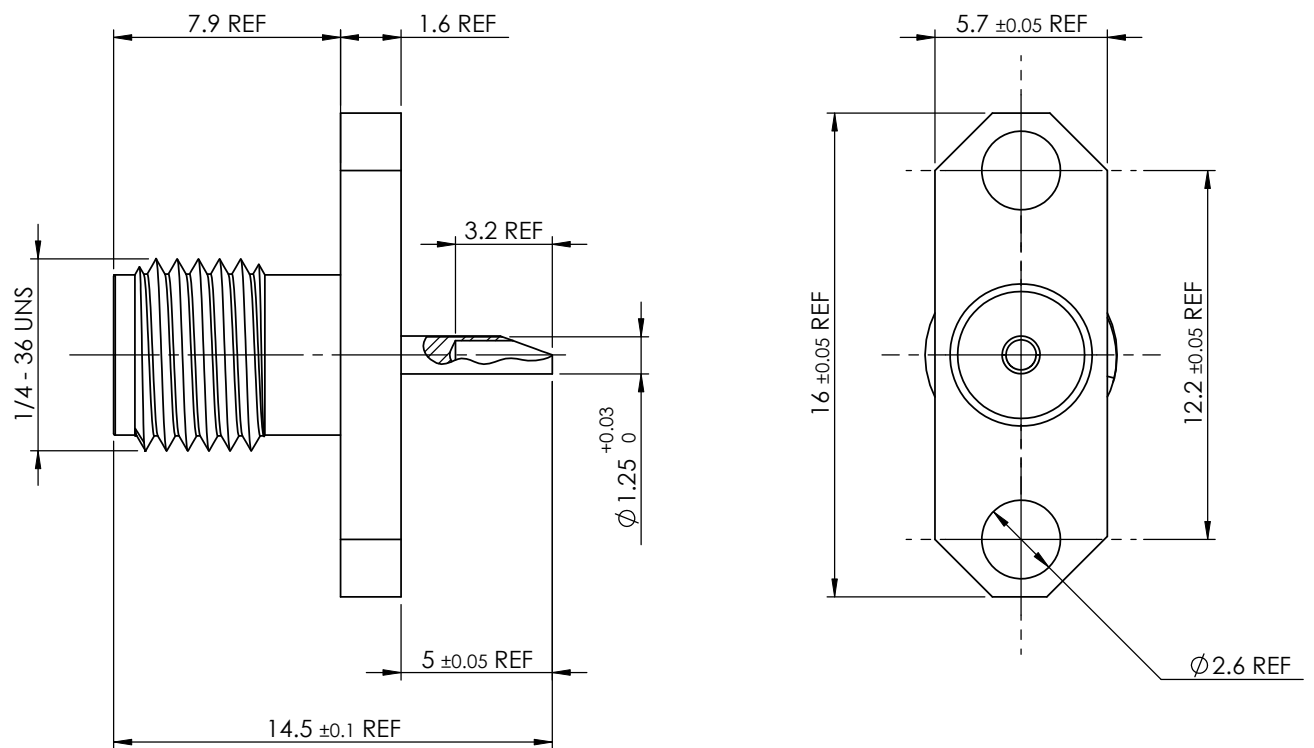


**Electrical Specification**  
 Impedance: 50 Ohm  
 Frequency: 0 - 12 Ghz  
 Dielectric W/V: TBC  
 Insulation res: 5000 M-Ohm min

**Mechanical Specification**  
 Centre contact retention  
 Axial Force: 27N  
 Cable Retention: N/A  
 Mating cycles: 500

**Environmental Specification**  
 Operating Temp: -65 to + 165 Deg C

**Tooling**  
 Centre Contact: SOLDER  
 COAX Tool No:  
 Crimp Sleeve: N/A  
 COAX Tool No:



	<b>COAX CONNECTORS LTD</b> 6-8 COLNE ROAD, TWICKENHAM, MIDDLESEX. TW1 4JR		REVISION A02	<b>A4</b>	DIMENSIONS ARE IN MILLIMETERS			5				
			ISSUE 2		NAME	SIGNATURE	DATE	4				
	<b>Description</b> SMA PANEL JACK (SOLDER BUCKET VERSION)		DRAWN		GE		17/01/2010	3	CENTRE CONTACT	BeCu	GOLD	
			CHK'D		DC		18/01/2010	2	INSULATOR	PTFE	N/A	
			APPV'D					1	BODY	BRASS	NICKEL	
<b>Part Number</b>		30-368-B3		THE INFORMATION IS GIVEN AS AN INDICATION ONLY AND IS SUBJECT TO CHANGE WITHOUT NOTICE. IN THE CONTINUAL GOAL TO IMPROVE OUR PRODUCTS, WE RESERVE THE RIGHT TO MAKE ANY MODIFICATIONS NECESSARY WITHOUT PRIOR NOTICE.			<b>ITEM</b>	<b>DESCRIPTION</b>	<b>MATERIAL</b>	<b>PLATING</b>		