

1. Slide crimp sleeve onto cable
2. Strip cable. Ensure centre conductor is not damaged. Tin centre conductor.
3. Fan the braid out
4. Slide the Reducing Sleeve and then the small insulator on to the cable between the cable dielectric and braid. Note orientation of both parts.
5. Place contact on Tinned centre conductor.
6. Ensure centre conductor is visible in the inspection hole in centre contact.
7. Heat centre contact so that the solder melts, adding additional as required. Care should be taken not to overheat the contact. Allow to cool.
8. Slide the cable into the connector and push home until the centre contact is in place
9. Slide the crimp sleeve over the braid
10. Crimp the crimp sleeve using the appropriate sized crimp tool (trim excess braid if necessary)



Electrical Specification

Impedance: 50 Ohm
 Frequency: 0 - 12 Ghz (Cable Limited)
 Dielectric W/V: 750 V rms
 Insulation res: 5000 M-Ohm min

Mechanical Specification

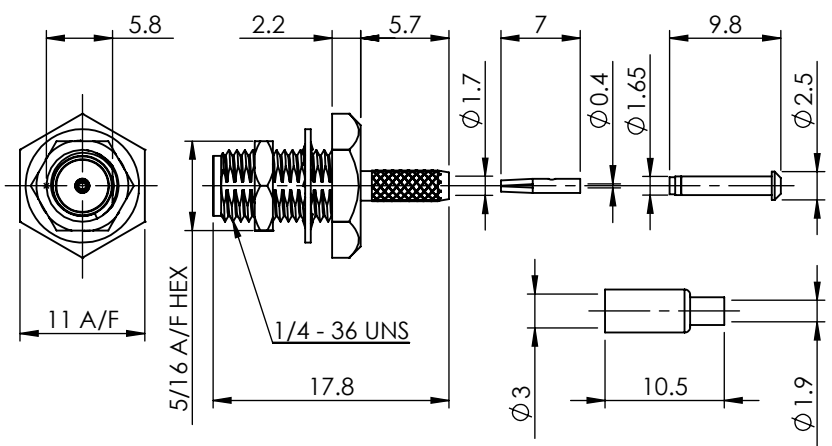
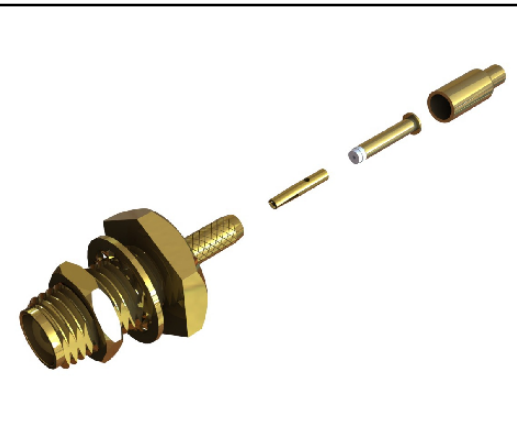
Centre contact retention
 Axial Force: 10N
 Cable Retention: 50N
 Mating cycles: 100

Environmental Specification

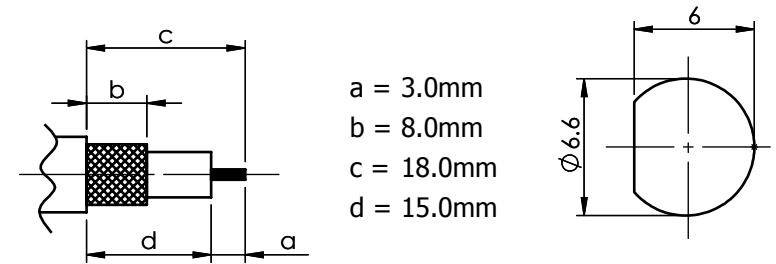
Operating Temp: TBC

Tooling

Centre Contact: SOLDER
 COAX Tool No: N/A
 Crimp Sleeve: HEX 3.52mm A/F
 COAX Tool No: 336J



STRIPPING & MOUNTING DIMENSIONS



7	CRIMP SLEEVE	BRASS	GOLD
6	CENTRE CONTACT	BeCu	GOLD
5	NUT	BRASS	GOLD
4	WASHER	BRASS	GOLD
3	REDUCER	BRASS	GOLD
2	INSULATORS	PTFE	N/A
1	BODY	BRASS	GOLD
ITEM	DESCRIPTION	MATERIAL	PLATING

COAX CONNECTORS LTD
 6-8 COLNE ROAD, TWICKENHAM,
 MIDDLESEX. TW1 4JR

COAX
 CONNECTORS LTD

Description SMA B/H JACK for RG178

Part Number 30-256-D3-AA

REVISION : A00

ISSUE : 1

A4 DIMENSIONS ARE IN MILLIMETERS

NAME	SIGNATURE	DATE
DRAWN	GE	24/06/2010
CHK'D	CM	24/06/2010
APPV'D		

THE INFORMATION IS GIVEN AS AN INDICATION ONLY AND IS SUBJECT TO CHANGE WITHOUT NOTICE. IN THE CONTINUAL GOAL TO IMPROVE OUR PRODUCTS, WE RESERVE THE RIGHT TO MAKE ANY MODIFICATIONS NECESSARY WITHOUT PRIOR NOTICE.