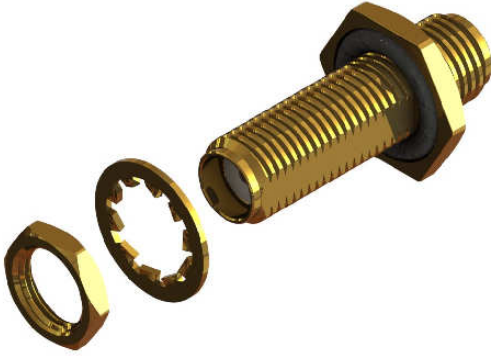
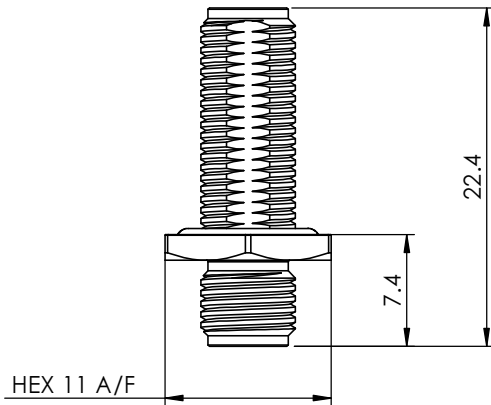
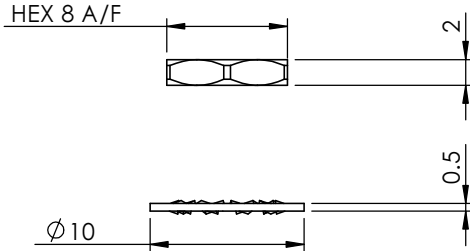


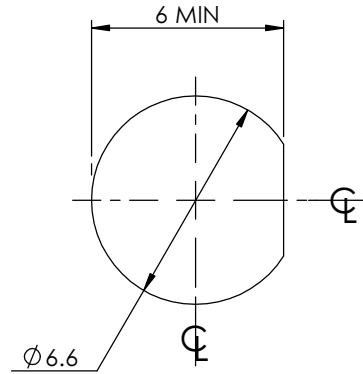
SMA STRAIGHT BULKHEAD JACK/JACK ADAPTOR 30-501-D3



images for illustration purposes only



RECOMMENDED MOUNTING HOLE:



RECOMMENDED TORQUE FOR PANEL NUT: 150 N.cm

MAXIMUM PANEL THICKNESS: 6mm

Environmental Specification

Operating Temp: -55 to +155 Deg C.

IP Rating (Mated): IP 65

Electrical Specification

Impedance: 50 Ohm

Frequency: 0-18 GHz

Dielectric W/V: 1000 Veff

Insulation res: 5000 M-Ohm

Mechanical Specification

Contact Retention: 27 N min

Cable Retention: NOT APPLICABLE

Mating cycles: 100

Weight: 4.45 g

Connector Interface

image for illustration purposes only



-24.5 dB @ 1.0 GHz

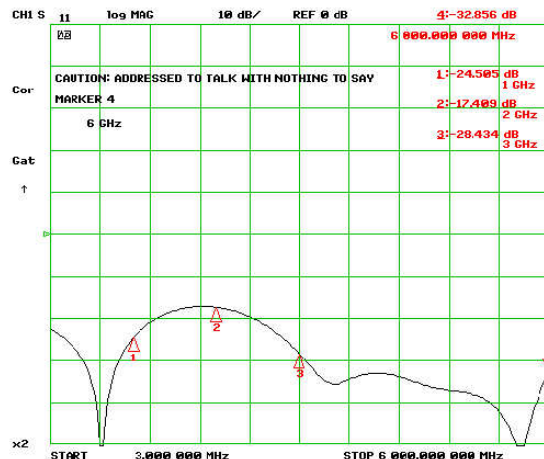
-17.4 dB @ 2.0 GHz

-28.4 dB @ 3.0 GHz

-32.8 dB @ 6.0 GHz

Performance

Return Loss Graph



ITEM	DESCRIPTION	MATERIAL	PLATING
6	LOCKWASHER	ST. STEEL	GOLD
5	GASKET	SILICONE	N/A
4	NUT	BRASS	GOLD
3	INSULATOR	PTFE	N/A
2	CENTRE CONTACT	BeCu	GOLD
1	BODY	BRASS	GOLD

A4 SHEET 1 OF 1		DIMENSIONS ARE IN MILLIMETRES		
REVISION :	A01	NAME	SIGNATURE	DATE
ISSUE :	1	DRAWN	GE	11/06/2012
		CHK'D	IG	12/06/2012
		APPV'D		

THE INFORMATION IS GIVEN AS AN INDICATION ONLY AND IS SUBJECT TO CHANGE WITHOUT NOTICE. IN THE CONTINUAL GOAL TO IMPROVE OUR PRODUCTS, WE RESERVE THE RIGHT TO MAKE ANY MODIFICATIONS NECESSARY WITHOUT PRIOR NOTICE.