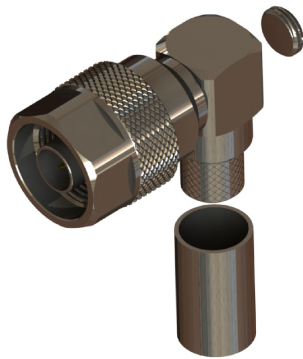
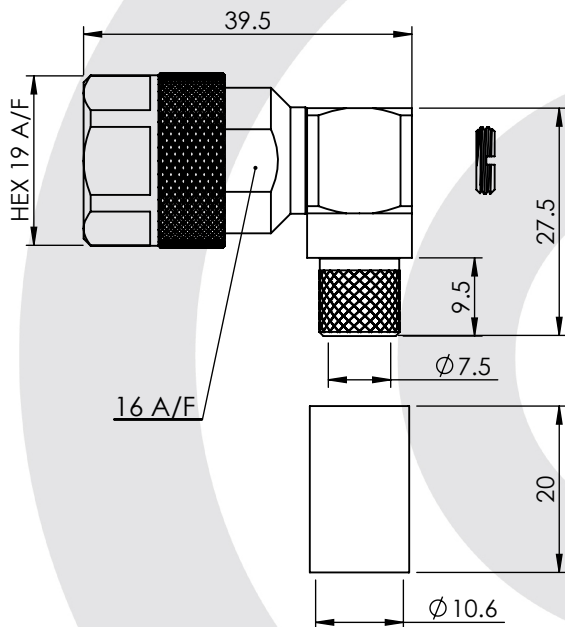


## N TYPE RIGHT ANGLED SOLDER/CRIMP PLUG

### 25-110-B3-DE



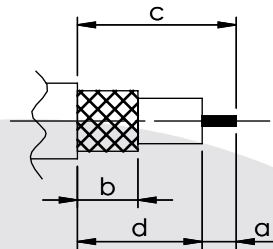
images for illustration purposes only



### Suitable for Cables:

(DE) LMR400, TZC50032, Belden 9913, RG8

### Stripping Dimensions



a = 4.5 mm  
b = 10.0 mm  
c = 23.0 mm  
d = 18.5 mm

\* CUT FOIL TO DIM. "d"

### Assembly Procedure: AP017

### Tooling

Centre Contact: SOLDER Tool No: Solder

Crimp Sleeve: HEX 10.9mm A/F Tool No: 336K

Alignment Tool: Not Applicable Extraction: Not Applicable

### Environmental Specification

Operating Temp: -55 to +155 Deg C.

IP Rating (Mated): IP 65

### Electrical Specification

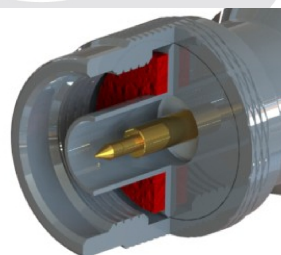
Impedance: 50 Ohm  
Frequency: 0-6 GHz  
Dielectric W/V: 2500 Veff  
Insulation res: 5000 M-Ohm

### Mechanical Specification

Contact Retention: 20 N min  
Cable Retention: 200 N min  
Mating cycles: 500  
Weight: 60.27 g

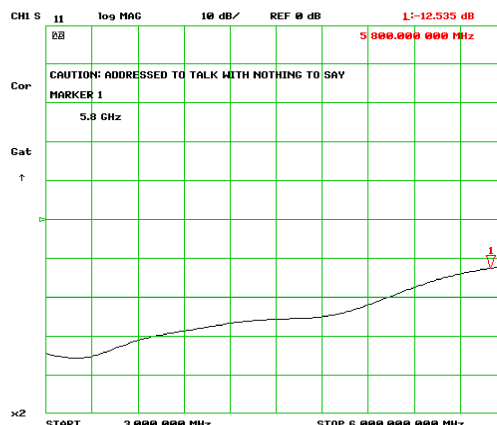
### Connector Interface

image for illustration purposes only



-33.0dB @ 1.0 GHz  
-28.0dB @ 2.0 GHz  
-20.0dB @ 4.5 GHz  
-12.0dB @ 6.0 GHz

### Return Loss Graph



9	OUTER CONTACT	BRASS	NICKEL
8	CAP	BRASS	NICKEL
7	RETAINING RING	PHOSPHOR BRONZE	NICKEL
6	COUPLING NUT	BRASS	NICKEL
5	GASKET	SILICONE	N/A
4	CRIMP SLEEVE	BRASS	NICKEL
3	INSULATOR	PTFE	N/A
2	CENTRE CONTACT	PHOSPHOR BRONZE	GOLD
1	BODIES	BRASS	NICKEL
ITEM	DESCRIPTION	MATERIAL	PLATING

<b>A4</b>	SHEET 1 OF 1	DIMENSIONS ARE IN MILLIMETRES		
REVISION :	A02	NAME	SIGNATURE	DATE
ISSUE :	2	DRAWN	IG	08/07/2010
		CHK'D	GE	19/07/2010
		APP'V'D		
6-8 COLNE ROAD, TWICKENHAM, MIDDLESEX. TW1 4JR				
THE INFORMATION IS GIVEN AS AN INDICATION ONLY AND IS SUBJECT TO CHANGE WITHOUT NOTICE. IN THE CONTINUAL GOAL TO IMPROVE OUR PRODUCTS, WE RESERVE THE RIGHT TO MAKE ANY MODIFICATIONS NECESSARY WITHOUT PRIOR NOTICE.				