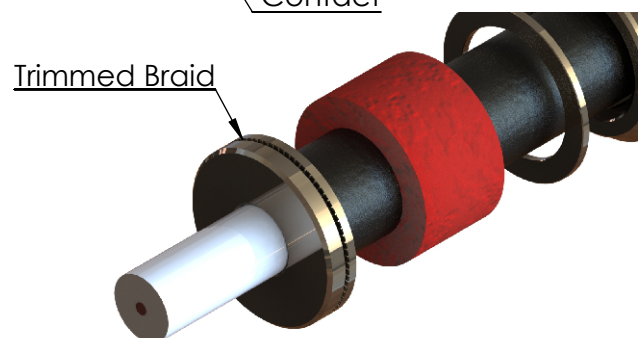
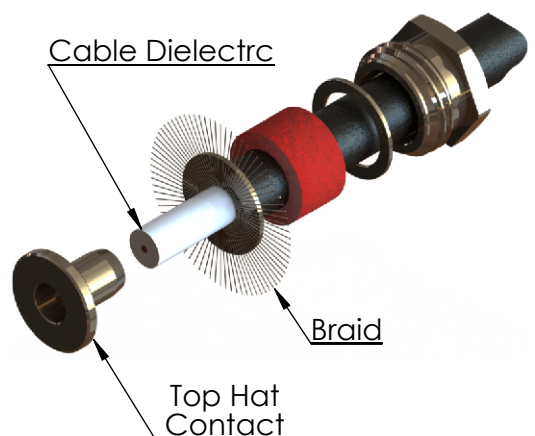
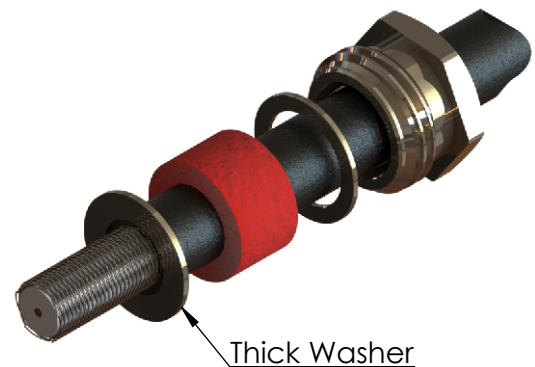
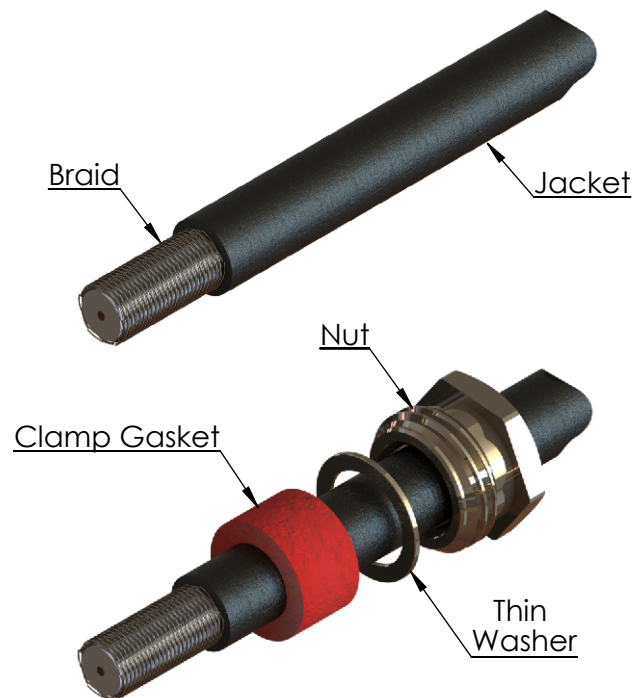



ASSEMBLY PROCEDURE : AP035

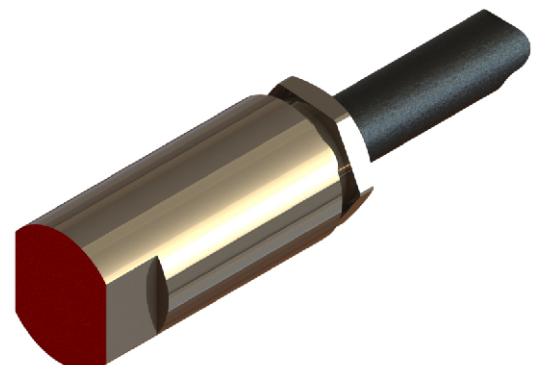
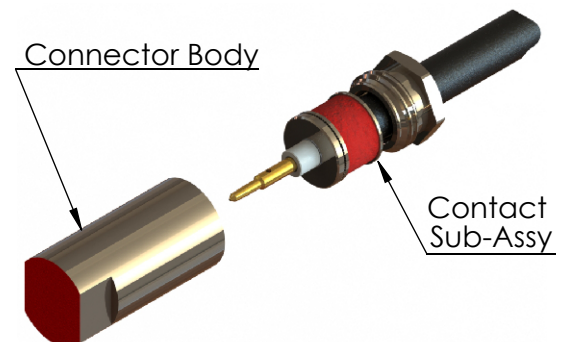
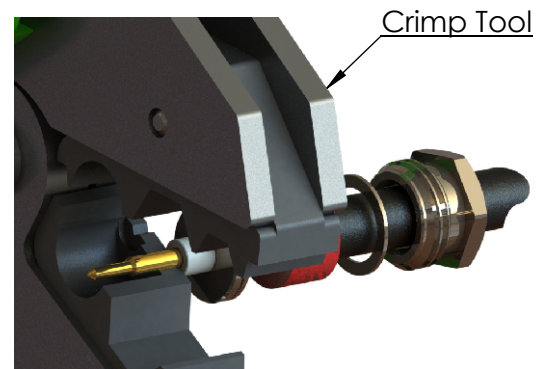
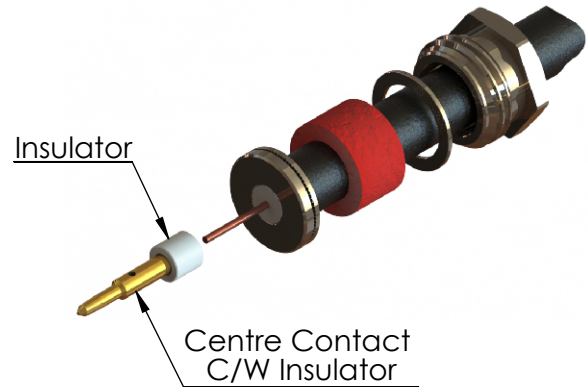
1. Strip the cable jacket to the dimensions given within the connectors datasheet.
2. Slide the Nut, Thin Washer and Clamp Gasket onto the cable as shown.
3. Carefully slide the Thick Washer over the Braid and up to the Cable Jacket. Evenly fan out the Braid, thus trapping the Washer.
4. With the Braid fanned out, place the tapered diameter of the Top Hat contact over cable dielectric. Push the Top Hat contact firmly home up to the Thick Washer, thereby clamping the Braid between the large diameter of the Top Hat contact and the Thick Washer. When pushing the Top Hat contact home, you must ensure that the smaller diameter of the Top Hat contact has successfully passed between the cable dielectric and braid of the cable.
5. Trim the excess Braid to same diameter as the Top Hat contact as shown.




| | | | | | |
|---|---------------------|---|--------------------------------------|--|------------|
| A4 | SHEET 1 OF 2 |  | DIMENSIONS ARE IN MILLIMETRES | | |
| REVISION : | A00 | DRAWN | GE | | 22/05/2013 |
| ISSUE : | 1 | CHK'D | PS | | 23/05/2013 |
| 6-8 COLNE ROAD, TWICKENHAM, MIDDLESEX. TW1 4JR | | APPV'D | | | |
| THE INFORMATION IS GIVEN AS AN INDICATION ONLY AND IS SUBJECT TO CHANGE WITHOUT NOTICE. IN THE CONTINUAL GOAL TO IMPROVE OUR PRODUCTS, WE RESERVE THE RIGHT TO MAKE ANY MODIFICATIONS NECESSARY WITHOUT PRIOR NOTICE. | | | | | |

ASSEMBLY PROCEDURE : AP035

6. Using a suitable tool, trim the Cable Dielectric flush with the end of the Top Hat contact, taking care not to damage the Centre Conductor.
7. Check to ensure the Centre Conductor is undamaged, and trim it to the length given within the Connector's datasheet.
8. Place the Centre Contact, complete with Insulator, over the Centre Conductor and up to the Top Hat contact. If the conductor is of stranded construction, ensure all the strands have entered the Centre Contact.
9. Check to see that the Centre Conductor is visible through the contact's inspection hole.
10. Now Crimp the Centre Contact in place using the appropriate sized crimping tool. This again is given within the datasheet. Make sure the Insulator on the Centre Contact is still flush with the Top Hat contact while doing this. Carefully inspect and check the joint.
11. Slide the Clamp Gasket and Thin Washer forward up to the Thick Washer. Insert this Contact sub-assembly into Connector body, checking that the Centre Contact is correctly placed within the Connector Body. Slide the Nut forward and engage the thread. Using a suitable spanner to hold the Connector body, tighten the Nut. Thus clamping the cable in place.
12. Check the Assembly.



| | | | | | |
|---|---------------------|---|--------------------------------------|------------------|-------------|
| A4 | SHEET 2 OF 2 |  | DIMENSIONS ARE IN MILLIMETRES | | |
| REVISION : | A00 | DRAWN | GE | SIGNATURE | DATE |
| ISSUE : | 1 | CHK'D | PS | | 22/05/2013 |
| 6-8 COLNE ROAD, TWICKENHAM, MIDDLESEX. TW1 4JR | | APPV'D | | | 23/05/2013 |
| THE INFORMATION IS GIVEN AS AN INDICATION ONLY AND IS SUBJECT TO CHANGE WITHOUT NOTICE. IN THE CONTINUAL GOAL TO IMPROVE OUR PRODUCTS, WE RESERVE THE RIGHT TO MAKE ANY MODIFICATIONS NECESSARY WITHOUT PRIOR NOTICE. | | | | | |